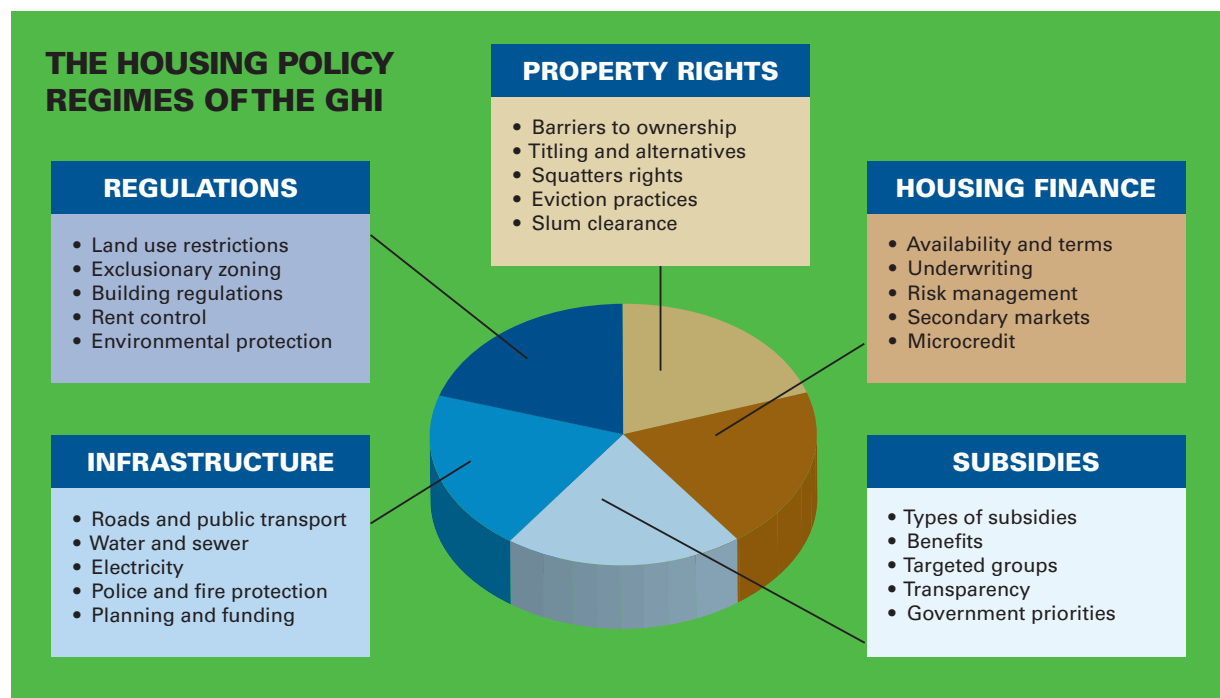


■ Global Housing Policy Indicators

The Global Housing Policy Indicators collect consistent, reliable and comparable information for measuring and monitoring the policy environment for adequate and affordable housing, especially for the urban poor. An extensive, transparent assessment tool, it helps inform debate and provides a basis for developing strategies and shaping policies for a well-functioning housing system. Nearly 25 cities have been evaluated using the GHI assessment tool.

The GHI provide a framework that focuses on five areas of housing policy:



GlobalHousingIndicators.org

The Global Housing Policy Indicators website provides:

- A one-stop portal for data, discussion, debate and dissemination.
- A feature that enables custom reports, allowing comparisons by location or by subtopics.
- Resources and publications for housing policy advocates and researchers across the globe.
- Blog posts that feature new research and expert commentary.

The GHI were made possible by generous funding support from The Rockefeller Foundation, Habitat for Humanity International, the Inter-American Development Bank and many other organizations and individuals that have contributed to the project as reviewers, advisers and partners.

For more information about the Global Housing Indicators, email info@globalhousingindicators.org.